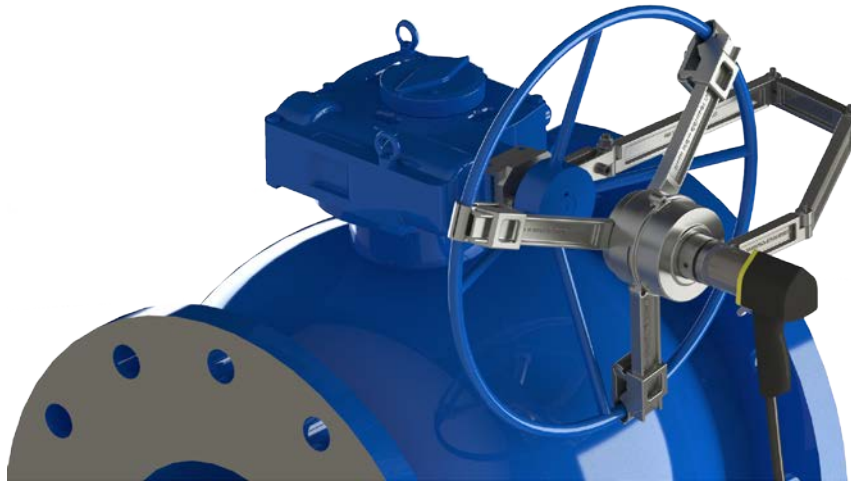


TorkDrive (EasiDrive) Data Sheet

Where valves are fitted and operated with SFC's EasiDrive – Portable Valve Actuator Solution, consideration may be given to the physical torque being applied in order to safely operate the valve.



DESCRIPTION

In most circumstances, manual adjustment of the power source (air or electric) restricts or limits the output torque and speed (RPM) of the EasiDrive. However, if the use of the portable actuator device is not restricted to larger valves and is used on a wide range of valve with differing sizes and operating torques, the TorkDrive would be the ideal solution. TorkDrive limits or restricts the operator from applying excessive force and protects the valve and valve seat from the over-torque that could be generated.

It can be mounted to either the valve handwheel, using the universal spider assembly or to the gearbox input shaft, using an adaptor kit, and if required the offset gearbox for rising stem gate valves.

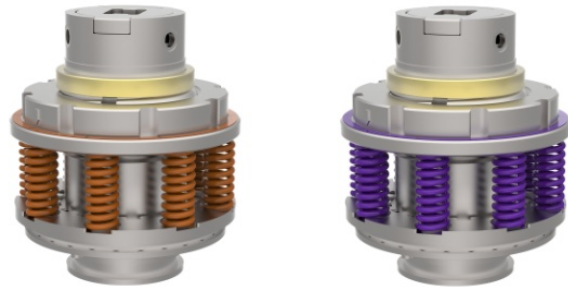
TorkDrive is set to a predetermined maximum torque and, if during the operation of the valve, the operating torque increases above the pre-set limit, the TorkDrive will slip, indicating an irregular valve condition. Following over-torque, the TorkDrive unit will automatically reset to the predetermined torque.

TorkDrive features unique clutch plates that are controlled by a series of calibrated compression springs. Two spring set configurations are available, a low range TorkDrive unit offering a maximum torque output range between 80Nm – 280Nm and a high range unit offering 250Nm – 420Nm. Each unit is factory set before installation and the unit can be adjusted to suit the host equipment's torque requirements using a calibrated setting scale within the body of the device. Each spring set has a unique colour code, thus ensuring that the correct torque range is always used.



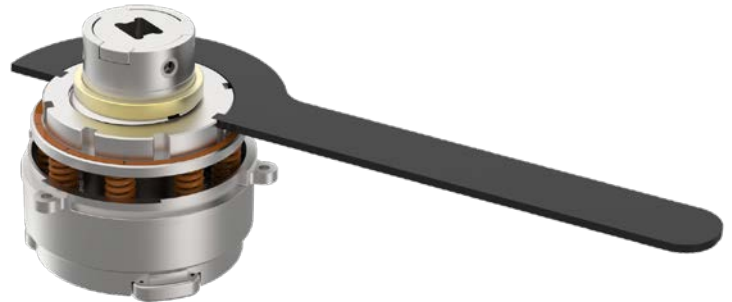
Colour Coded Spring Sets:

- 80Nm – 280Nm
- 250Nm – 420Nm



TorkDrive Torque Setting:

- For making fine adjustments



TorkDrive Technical Specifications:

- Safeguards valves from excessive torque
- Mounted to either the valve handwheel or valve input shaft
- A compact design, weighing 6.1kg
- All external parts – 316 Stainless Steel
- Maintenance free
- Suitable for all climatic conditions - IP65 protection
- Withstands temperatures from -20°C to +100°C
- Torque setting range from 80Nm – 420Nm
- Unique colour coded spring sets (adjustable)
- Adaptable to any size and type of valve
- Can be used as a standalone solution (without the EasiDrive) for manual operation of valves