
Installation Instructions

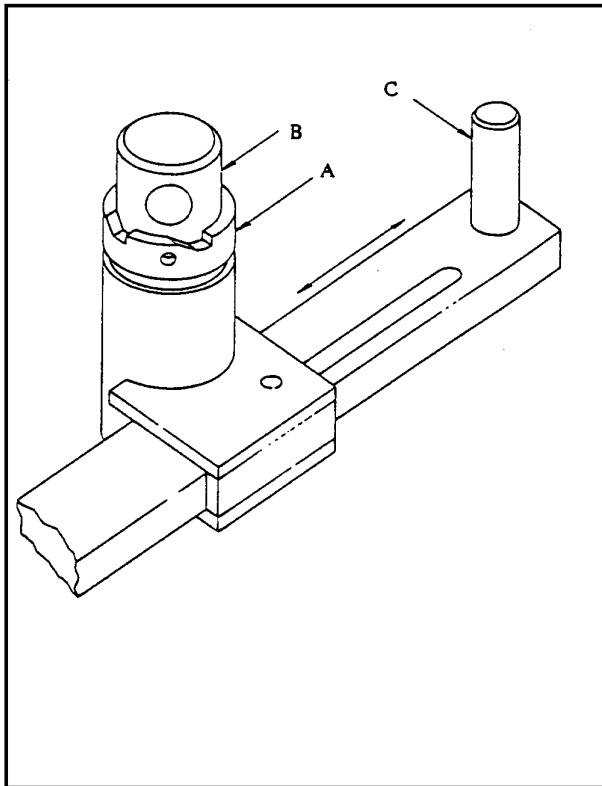


Fig 1. Slide bleed tube (A) over bleed bolt (B) and ensure that bar key (C) slides back & forth easily.

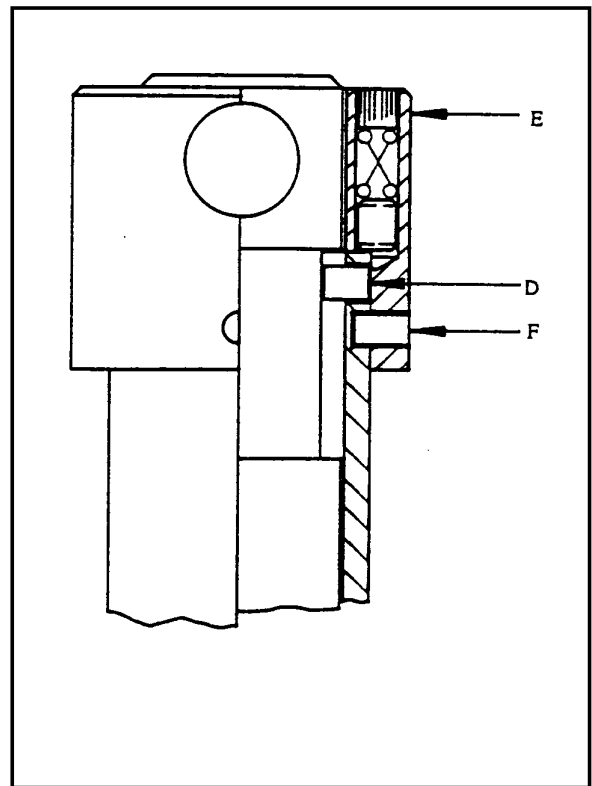


Fig 2. Tap 4 off 3/16" dia. x 1/4" tension pins (D) home to affix bleed tube before attaching ratchet assembly (E) with 4 off 3/16" x 5/16" tension pins (F).

SPECIAL NOTES

1. Before fitting, ensure that the door has the same Tag No. as marked on the lock body.
2. Obtain permit and check if safe to operate the door, prior to fitting the lock.
3. After fitting the lock, carry out full function test if safe to do so.
4. Instructions apply to "GD BANDLOCKS" - Similar style of fitting may apply to other makes of closure.

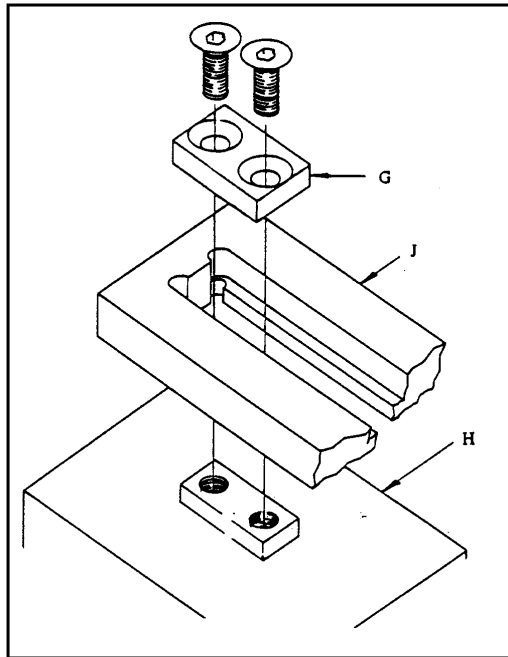


Fig 3. If necessary, affix slide plate (G) to lock ass'y (H) through [slide] bracket (J) using M6 CSK HD screws provided.

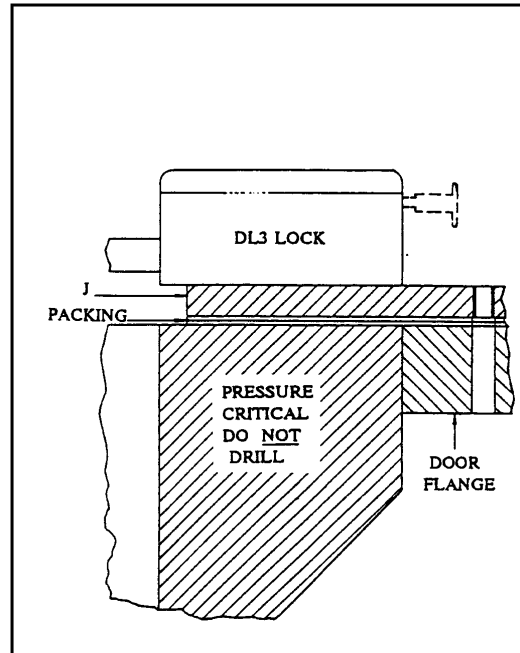


Fig. 4. Insert bar key into lock ass'y & remove SFC key. Place lock ass'y in desired position on door flange, then drill through door flange (9mm dia.) to suit SFC [slide] bracket (J) & M6 x 10 deep to suit fixings security cover. (See Fig 6).

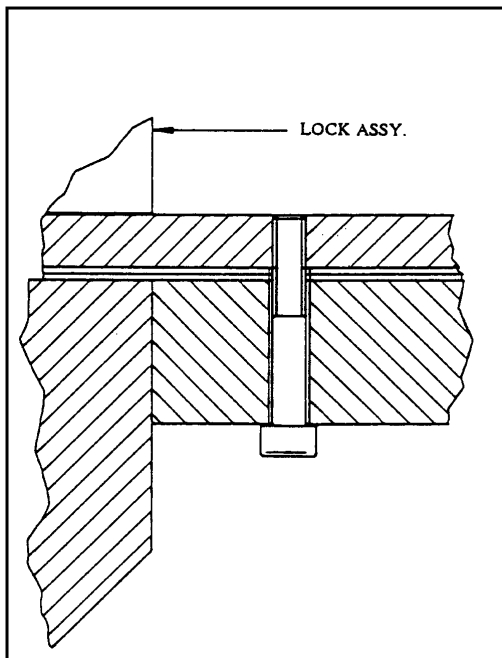


Fig 5. Bolt through flange to slide bracket with M8 Cap. Hd. bolts supplied.

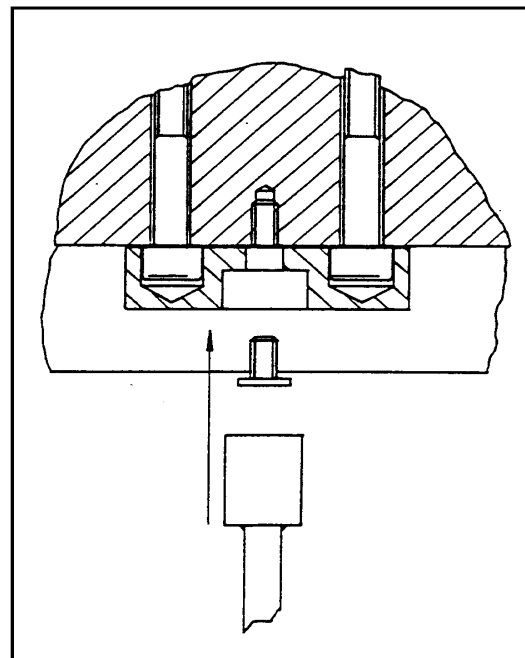


Fig. 6. Attach fixings security cover using M6 x 12 (ref SFC 25) security screw and special tool provided.