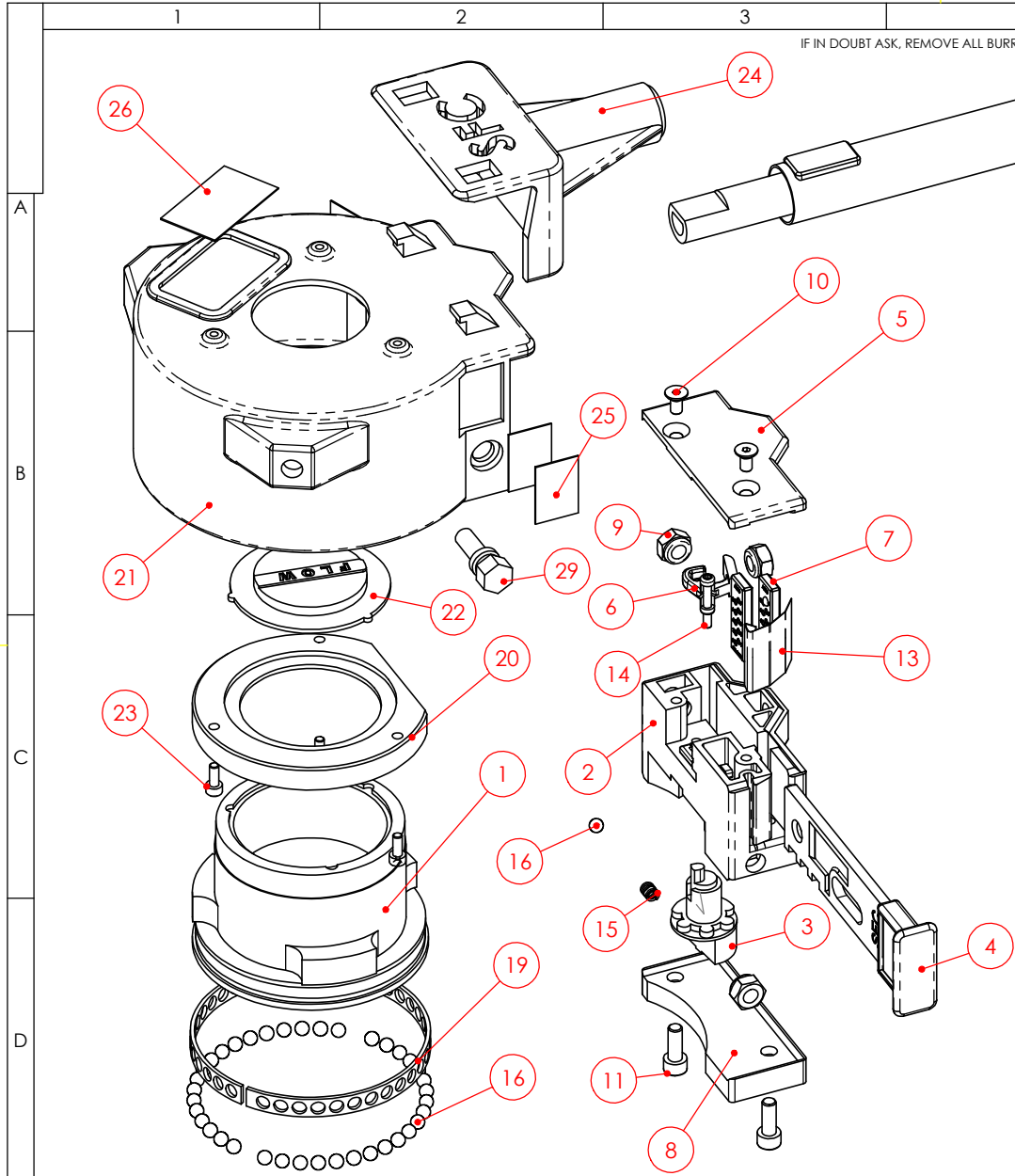


IF IN DOUBT ASK, REMOVE ALL BURRS



ITEM NO.	QTY.	PART NO.	MATERIAL	DESCRIPTION
1	1	ATL62501	ATL62500	ATL6 Cast Adaptor Machining Detail
2	1	ATL62201	ATL62200	ATL Cast module body Machining Detail
3	1	ATL62800	304 Stainless Steel	ATL CAST GEAR PEG
4	1	SFC01600	316 Stainless Steel	SFC CAST KEY
5	1	ATL62300	304 Stainless Steel	ATL CAST LOCK MODULE TOP PLATE
6	1	SFC02300	316 Stainless Steel	QL ANTI-OVERRIDE ARM CAST
7	2	SFC47000	316 Stainless Steel	Stainless Steel Code Bar
8	1	ATL62401	ATL62400	ATL6 Machined Bottom Plate
9	3	NNM0800S	A2 Stainless Steel	Nylok nut
10	2	STM0510S	A2 Stainless Steel	Socket Head Countersunk Screws
11	2	SCM0616S	A2 Stainless Steel	M6 x 16Lg Cap Head Screw
12	1	SFC32400	302 Stainless Steel	QLB/C Anti-Override Spring
13	1	GLM10500	301 Stainless Steel	GLM Weather Strip
14	1	POI0216S	302 Stainless Steel	Slotted Spring Pins
15	1	SFC02900-c	302 Stainless Steel	Springs
16	39	AOM0600S	316 Stainless Steel	Ball Bearing
17	3	RRU0203S	A2 Stainless Steel	RRU-RIVETS
18	1	ATL63300	304 Stainless Steel	ATL Secondary Anti-Override Arm
19	1	ATL61200	PA12	Bearing cage
20	1	ATL60800	Phosphor Bronze	ATL6 TOP BEARING RING
21	1	ATL63201	ATL63200	ATL6 Body and Bottom Plate Machining Detail
22	1	ATL62900	304 Stainless Steel	ATL6 Cast Indicator
23	3	SCM0410S	A2 Stainless Steel	Caphead Screws
24	1	ATL40900	304 Stainless Steel	ATL Lever
25	6	SFC41900	Metalised Polyester	Key and Frontal Tag Clear over-lay
26	1	Q16627	N/A	47 x 28 Sticky Pad
27	1	GLS02700	316 Stainless Steel	Body Label With Engraving Area
28	1	QLS20300	CD4MCU Duplex	QLS Small Operating Lever Extension
29	2	ATL60900	304 Stainless Steel	M8 Shear Bolt



Tel: 01376 517901 Fax: 01376 518720
email: sales@smithflowcontrol.com

3rd ANGLE PROJ



DO NOT SCALE

TITLE

ATL6 Lever Operated Exploded View

This drawing is the property of SMITH FLOW CONTROL Ltd & must not be used in any way prejudicial to their interests
NOTE: This is computer generated & should not be manually modified in any way.

DIMENSIONS IN MM
TOLERANCES UNLESS OTHERWISE STATED
0 0.5 +
0.0 0.10 +
0.00 0.05 +
ANGLE 1° +
FINISH
TURNING : N7
MILLING : N10

JOB No	No OFF	MATL	FINISH		
DRN	DATE	SCALE	SHT OF	REV	ECN No
ARB	23-07-2002	1:2	1 OF 1		
CHKD	ORIGINAL	DRG No	ATL62002	STAMP PT No	REV
	A3			WHERE SHOWN	A